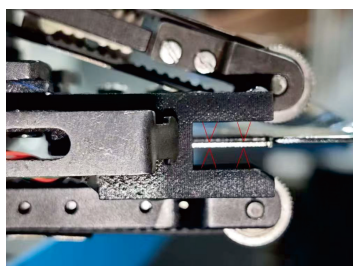


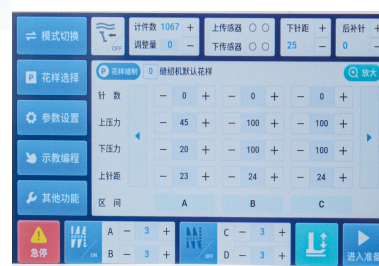
A100自动拼缝机



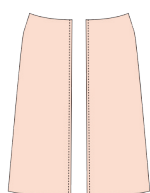
智能识边技术



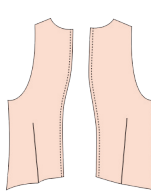
智能对边技术



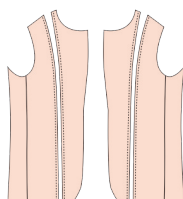
个性化界面



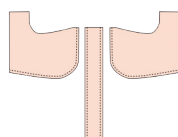
[上袖缝]
(左右)



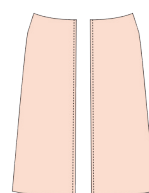
[里袖缝]
(左右)



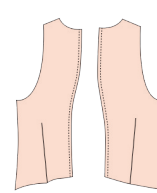
[瘦身缝]
(左右)



[台场缝]
(左右)



[女裙前片中心缝]
(外/里)

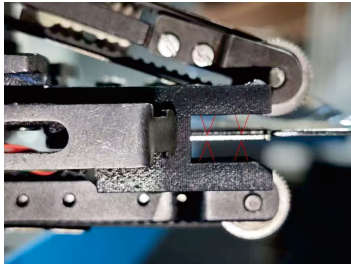


[后身中心缝]
(外/里)

技术参数

机型	机针	线数	针迹长度	压脚高度 (mm)	最高转速 (S.p.m)	中薄料	体积 (mm)	重量 (kg)
A100	DB×19-18#	2	下4,上8	1-11	4000	✓	1200×2500×1500	120/200
A100-QD	DB×19-18#	2	下4,上8	1-11	4000	✓	1200×2500×1500	120/200
A100-H	DB×111-18#	2	下4,上8	1-11	4000	✓	1200×2500×1500	120/200

A100 Automatic Joining Machine



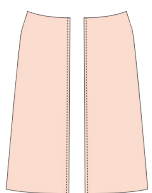
Intelligent Edge Detection Technology



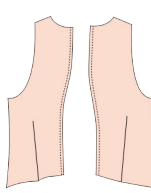
Intelligent Edge Alignment



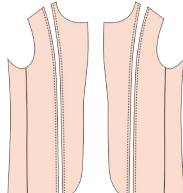
Personalized Interface



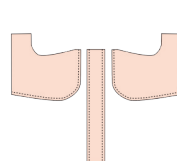
Sleeve joining seam (L/R)



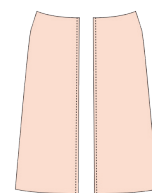
Sleeve inseam (L/R)



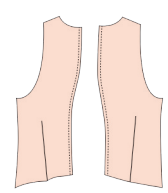
Side seam (L/R)



Back facing seam (L/R)



Front skirt center seam (outer/inner)



Back center seam (outer/inner)

Specification

model	needle	thread number	stitch length (mm)	presser foot height (mm)	max speed (S.p.m)	medium to thin materials	volume (mm)	weight (kg)
A100	DB×19-18#	2	up4,down8	1-11	4000	✓	1200×2500×1500	120/200
A100-QD	DB×19-18#	2	up4,down8	1-11	4000	✓	1200×2500×1500	120/200
A100-H	DB×111-18#	2	up4,down8	1-11	4000	✓	1200×2500×1500	120/200